



VILLA  
SISTEMI  
MEDICALI

MEDICAL  
IMAGING

# Apollo

Remote controlled RF system

next generation remote controlled R/F system



## Innovation

Apollo is the *next generation* remote controlled RF system from Villa Sistemi Medicali, designed for maximum patient throughput and application flexibility.



*Four sides open access and the industry's lowest tabletop height will ease patient loading operations, as well as procedures requiring support personnel to operate in the table area.*

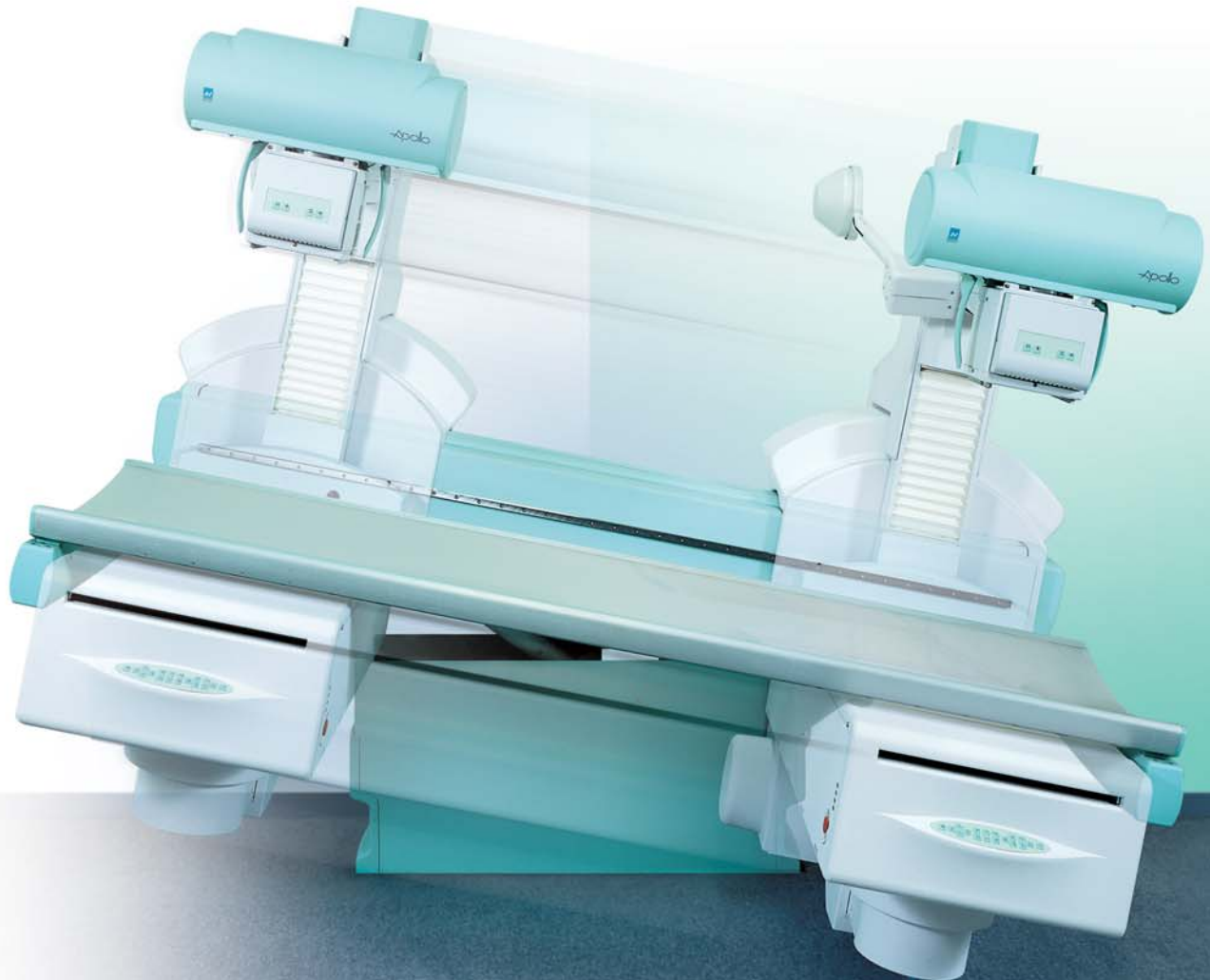
In the demanding environment of your imaging department, Apollo is one step ahead in the direction of efficiency. A perfect mix of flexibility, ease of use, image quality and connectivity allow you to get the best out your RF room. You benefit from carefully engineered solutions that make every examination fast and effective, with the widest scope of applications you have come to expect from an RF room.





## Increased workflow

We know how important *your investment* is, and how fast you need to recover it. That's why Apollo is designed to *maximize the workflow* of your RF suite.



Wide, fast and accurate movements reduce the patient preparation time and increase workflow with the additional benefit of improving patient comfort. The main movements have progressive speed control that combines accuracy for small adjustments and speed for extended travels.

The wide scanning range provides complete patient coverage without the need for longitudinal tabletop movement, resulting in faster positioning and better patient comfort.

Even the finest details have been considered to make the system adapt to the way you work: you can define preset table positions to speed-up the most frequent procedures, select the tilting speed or even choose your preferred movement orientation according to table or monitor view.



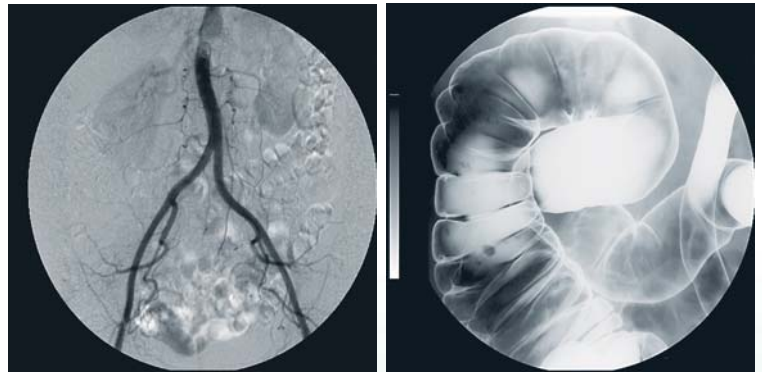
*The powerful spot film device with line and cross divisions will fit every application need. A unique cassette loading and unloading mechanism speeds up even this frequent operation. All table movements can also be activated via the tableside keypad to improve efficiency during the patient preparation phase.*

## Image Quality

Images are the *final product* of every radiographic exam.

High integration between each sub-system ensures that the entire imaging chain always works at its best to provide the highest picture quality with minimal manual settings, allowing you to concentrate on your patient, rather than on the equipment. Reduced skin to receptor distance, fully automatic zero point technique, state of the art CCD cameras with advanced noise reduction algorithms, are the key to consistent image quality in every application. Should your intention be to go digital, DIVA-D with its 1K x 1K, 12 bit camera and 25 frames per second acquisition speed, is the solution.

DIVA's anatomical based programs automatically optimize the entire imaging chain from exposure parameters to image processing algorithms, and the optional image intensifier lift device is also available to further improve the digital image quality.

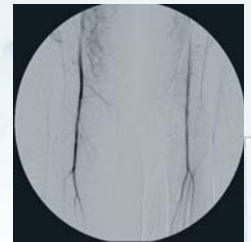
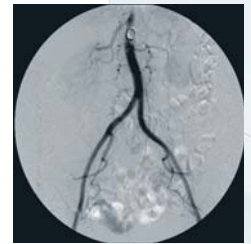


## Wide scope of application

The advanced design of Apollo provides *unsurpassed application flexibility* for every need in radiographic and fluoroscopic procedures.

Apollo maximizes the flexibility of the remote controlled RF approach. Skeletal, GI, tomography, vascular, ERCP are performed easily and quickly. Fast switching between applications is guaranteed by careful attention to design details such as the out-of-field automatic compressor parking or the user-preset table positions. The large tabletop, with an ample radio-transparent area, provides for extra anatomic coverage and easy centering of every anatomic region.

Reduced weight, compact design and fully symmetrical movements, such as 90/90° tilting, solve every installation barrier, helping you to get the best out of your RF system in all working environments.



*The large column scanning range provides complete patient exploration without longitudinal patient movement. The optional stepping angio package can be supplied for peripheral angiography.*



*Chest exams are possible thanks to the continuously adjustable source to image distance of up to 150 cm, or with an additional chest stand.*



*Extremities can easily be executed with the patient standing only a few centimeters above the floor.*



*The tilting column allows to take oblique projections at both edges of the tabletop, especially useful in skeletal, gynecological or urological applications.*



*Fully electronic bi-directional tomography without connection bar, can be performed on film or in digital mode and in any position of the table.*



*GI studies are easily carried out in upright, horizontal or Trendelenburg position.*



## Safety

Apollo is built with a high degree of *intrinsic safety features* for your peace of mind during everyday operation.

Special attention is given to patient's dose reduction, by employing a number of provisions, such as low-absorption tabletop materials (plastic or carbon fiber), reduced skin-to-film-distance, automatic collimation, fully automatic parameter settings in both fluoro and exposure (zero point technique).

The retractable grid can be automatically parked out of field for additional dose reduction, such as during pediatric exams.

Specifically designed motion algorithms keep the target organ centered during oblique projections in fluoroscopy, thereby reducing the examination time as well as patient radiation exposure.

An integrated safety supervisor chip continuously checks that table movements and X-ray emission are within allowed limits to ensure the highest possible patient and operator safety.



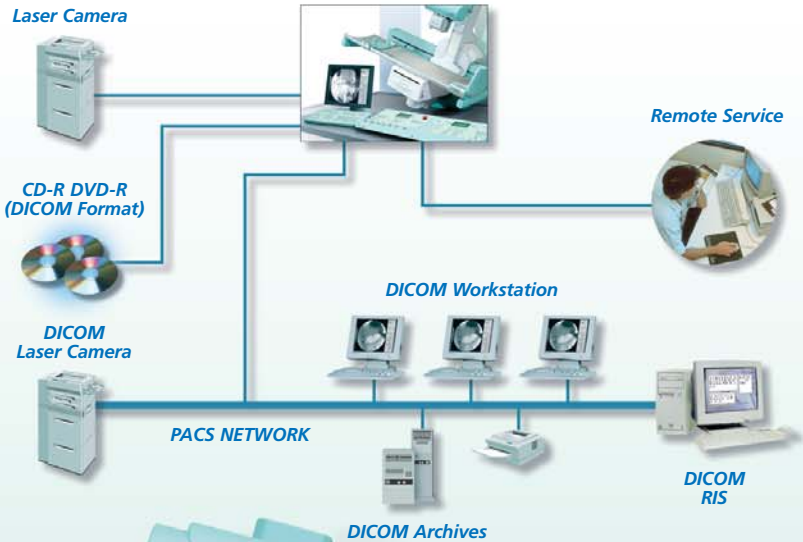
# Connectivity

DIVA-D adds the *power of digital imaging* to further enhance the workflow of your room

The DIVA-D acquisition system perfectly matches Apollo, when your goal is to create a digital RF or DSA room with the maximum patient throughput and full Dicom connectivity for seamless integration into your PACS network.

DIVA-D supports the most common Dicom 3 operation classes. With Print class you can send images to the department imagers for hardcopy. Store class provides connection to image reviewing stations for softcopy reading or to archival units for long term storage. Worklist class will give additional integration with the hospital RIS/HIS system for direct transfer of patient data to the acquisition station. An optional CD/DVD writer can be supplied with the DIVA-D for immediate images backup directly at the system console.

The system consoles with integrated design combine fast and efficient exam setup with the highest installation flexibility.



**Villa Sistemi Medicali long-standing experience at the service of our customers**



**Competence in x-ray systems**

Villa Sistemi Medicali specialists can provide qualified information on new x-ray systems, room structure and installation and equipment positioning.

**A wide range of equipment**

Villa Sistemi Medicali is among the major European manufacturers of radiological systems and offers a wide range of products, such as:

- Digital radiographic and angiographic systems
- Remote controlled tables
- Classical tilting tables
- General rad floating tables
- Chest stands
- Mobile units
- Surgical C arms
- HF Generators
- Dental units, Intra-oral and panoramic

**Our priority: Technical Service**

A wide network of highly skilled service engineers ensures effective and reliable maintenance of all Villa Sistemi Medicali equipment installed worldwide. Preventive maintenance programs and Service Contracts are adapted to the needs of our customers

**Logistic services: a widespread presence**

Spare parts, accessories and consumables are shipped daily by Villa Sistemi Medicali to all its customers worldwide.